

## Cuffs and flanges

*Help to make sure things run smoothly right through to the end.*



**NEW:**  
Combiflex - connections now also available in FDA-quality!



### PU screwed Cuff EL

for Master-PUR hoses,  
**electrically conductive**  
 $R_{\Omega} \leq 10^4 \text{ Ohm}$

#### Applications

Special cuff for following hose types: Master-PUR and Master-PVC hoses, vacuum cleaner; suction- and blower plants, transport plants.

#### Standard production:

- DN 38 - DN 70
- Colour: black

#### Temperature Range:

- -40 °C up to +90 °C
- intermittent to +125 °C



### Combiflex PU Cuff

PU soft cuff for Master-PUR hoses

**The suitable incorporation of the housewall into the thread of cuff offers a smooth pass between hose and cuff.**

#### Applications

Special screw on cuff to suit all Master-PUR L and Master-PUR H hose types.

#### Standard production:

- DN 32 - DN 300
- Colour: black

#### Available on request:

- Fixed version for leak proof connection with tensile strength

#### Temperature Range:

- -40 °C up to +90 °C
- intermittent to +125 °C

# Cuffs and flanges



## Combiflex PU Cuff V

PU soft cuff for Master-PUR hoses on steel pipes acc. to DIN 2448/DIN2458

**Depending on the thickness of the pipe wall a through bore may be possible between pipe and cuff/hose.**

### Applications

Special screw on cuff to suit all Master-PUR L and Master-PUR H hose types.

### Standard production:

- DN 32 - DN 300
- Colour: black

### Available on request:

- Fixed version for leak proof connection with tensile strength

### Temperature range:

- -40 °C to +90 °C
- intermittent to +125 °C



## Combiflex PU Cuff V-EL

PU soft cuff for Master-PUR hoses electrically conductive  $\leq 10^4$  Ohm.

**Depending on the thickness of the pipe wall a through bore may be possible between pipe and cuff/hose.**

### Applications

Special screw on cuff to suit all Master-PUR L and Master-PUR H hose types.

### Standard production:

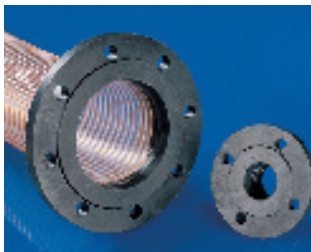
- DN 32 - DN 100
- Colour: black

### Available on request:

- Fixed version for leak proof connection with tensile strength

### Temperature range:

- -40 °C to +90 °C
- intermittent to +125 °C



## Combiflex PU fixed flange

for counter flanges acc. to DIN 2632/DIN 2633

**Offers a smooth pass between hose and flange.**

### Applications

Screw on plastic fixed flange for connection to all Master-PUR L, Master-PUR H, Master-PUR SH and Master-PUR HX hose types.

### Standard production:

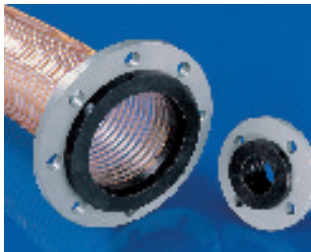
- DN 50 - DN 300
- Colour: black

### Available on request:

- Fixed version for leak proof connection with tensile strength

### Temperature range:

- -40 °C to +90 °C
- intermittent to +125 °C



## Combiflex PU swivel flange

for counter flanges acc. to DIN 2632/DIN 2633

**Offers a smooth pass between hose and flange.**

### Applications

Screw on plastic collar to accept swivel flanges for connection to all Master-PUR L, Master-PUR H, Master-PUR SH and Master-PUR HX hose types.

### Standard production:

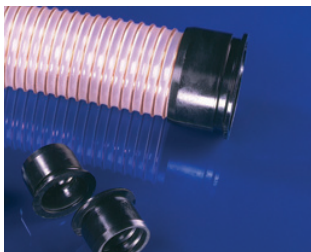
- DN 50 - DN 300
- Colour: black

### Available on request:

- Fixed version for leak proof connection with tensile strength

### Temperature range:

- -40 °C to +90 °C
- intermittent to +125 °C



## Combiflex PU cone flange

following to DIN 3016

**Offers a smooth pass between hose and flange. Connection without reducing bore is possible.**

### Applications

Screw on plastic quick coupling system for connection to all Master-PUR L, Master-PUR H, Master-PUR SH and Master-PUR HX hose types.

### Standard production:

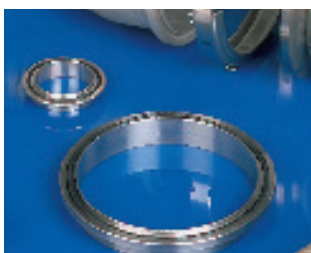
- DN 50 - DN 300
- Colour: black

### Available on request:

- Fixed version for leak proof connection with tensile strength

### Temperature range:

- -40 °C to +90 °C
- intermittent to +125 °C



## Welding neck cone flange

following to DIN 3016

### Applications

For quick coupling of Combiflex PU cone flanges to: steel pipes, elbows, reducers, metal sockets, machines.

### Standard production:

- DN 50 - DN 250