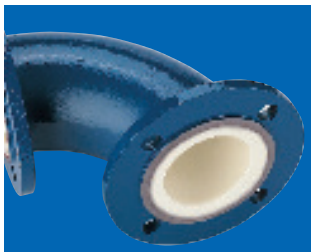
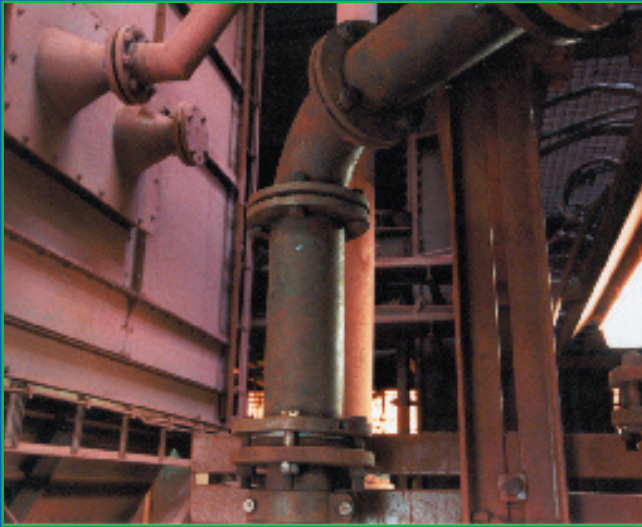


# PU coated tubes and tube bends



## Master-PROTECT tube bend

PU coated tube bend

### Applications

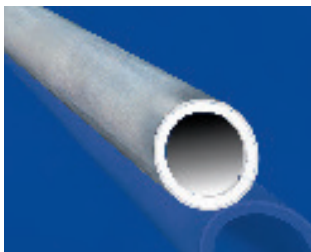
Conveyor plants

### Delivery forms:

- DN 50 - DN 200
- pressure range PN 6 - PN 10/16
- colour of coating: beige

### Temperature range:

- -40 °C up to +80 °C
- intermittent to +110 °C



## Master-PROTECT tube

PU coated tube

### Applications

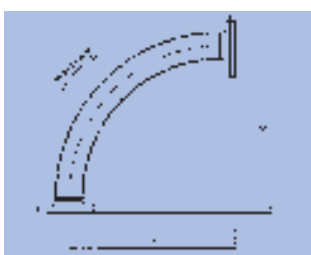
Conveyor plants

### Delivery forms:

- DN 50 - DN 200
- pressure range PN 6 - PN 10/16
- colour of coating: beige

### Temperature range:

- -40 °C up to +80 °C
- intermittent to +110 °C



Before

## Master-PROTECT installation kit:

### Compatible system for all existing installations

Master-PROTECT tube bends can be adapted to existing installations without any need for structural alterations.

### Trouble-free replacement of:

- Tube bends with large bend radii
- Conventional wear-protected bends

### We require

- Indication of dimensions A und B (see illustration)
- Details of the required connection flange

We use these details to create a solution tailored to your needs.

We supply standard connection dimensions with fixed flanges (PN 6, PN 10/16) and standard internal diameters (DN 50 - DN 200) conforming to DIN 2448, which permit seamless joins between the PU casing and the subsequent pipe conduits.

### Delivery forms:

- DN 50 - DN 200
- pressure range PN 6 - PN 10/16
- Fix lengths

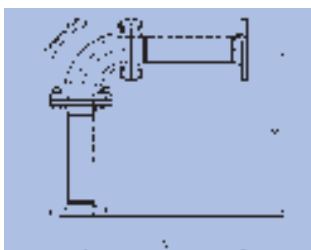
### Advice:

For installation you need in each case two tubings

### Temperature range:

- -40 °C up to +80 °C\*
- intermittent to +110 °C\*

\* in association with Master-PROTECT tube bends



After